

D. Andrikopoulos

EΩΣ

**For Piano, Live Electronics
and Tape**

Piano

For
Lorenta

EΩΣ (2004)

For Piano, Live Electronics and Tape

Eos is the reflection of the first light on the morning sky. The moment that darkness is breaking, the moment that its shadows are taking shape and we, for the first time, can get a clearer view of their reality. A game between the surreal world and our way of interpreting him.

Eos shadows are the tracks of another reality, a reality that is not possible to grasp. A reality that goes over our understanding and connects us with the non-real imaginary world. They are shadows of our past and our cultural heritage and they are morphing the way of our understanding and the answers that we give to our questions. A sum of observations that mixes with memories. How do we perceive and interpretate this reality and events, the nature and the way that we look on them is something that I try to investigate in this work.

The first ideas for this piece came while reading the book of F. Pessoa " The hour of the Devil ". A line: "Darkness-Temptation-Magic-Destiny-Infinity", the names of the five continuous movements of the piece, formed a basic point of departure to this investigation.

Signs Explanation:



Use a heavy Bass-Drum beater and hit the strings inside the piano approximately in the notated pitch



Finger glissando inside the piano starting from the notated pitch and ending (if notated) in the notated pitch. The duration of the glissando must be approximate to the notated duration of the note.



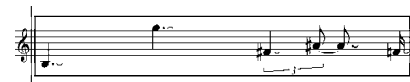
String plucked with finger



Dampen string (at their beginning) with the end of the fingers, while other hand plays the same notes



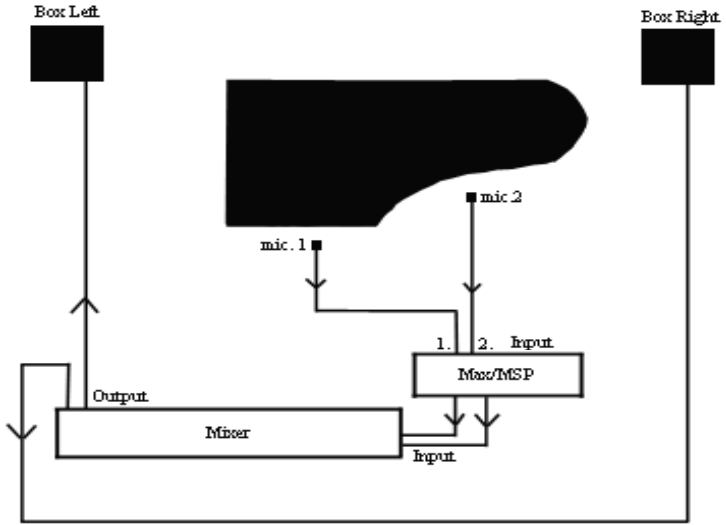
Hit with the palm of the hand the strings approximately in the notated pitch



Play the notes inside the square once as input for sound development from Max/MSP



Max/MSP events control



For the execution of Eos are needed: 2 Microphones, Max/MSP and normal amplification.

The signs on the score: $\boxed{1}$ and $\textcircled{1}$ are referring to Max/MSP controls.

$\boxed{1}$ and the other numbers in square enclosure are controlling live sound development events.

$\textcircled{1}$ and the other numbers in cycle enclosure are controlling the loading and play of the tape part in Max/MSP

ΕΩΣ

I. Darkness.(Misterioso) ♩ = 60

D. Andrikopoulos

Piano

Max controls
1 2
① ②

Max
8 9 10 11 12 ③

Measures: 1, 2, 3, 4, 5, 6, 7, 8, 9, 10, 11, 12

Time signatures: 8/4, 6/4, 8/4, 10/4, 4/4, 8/4, 8/4, 9/4, 12/4, 6/4

Dynamics: *pp*, *p*, *PPP*, *ppp*, *mp*, *mf*, *ff*, *pppp*

Performance instructions: *poco accel.*, *3x*, *Gliss.*

Other markings: *r.h.*, *l.h.*, *sf*, *pp*, *ppp*, *pp*, *ppp*